

WILDEN'S DRUM PUMP KIT

A BETTER WAY TO PUMP



- SELF-PRIMING
- 8.6 BAR (125 PSIG) MAX
- ON/OFF RELIABLE
- INTRINSICALLY SAFE
- ABILITY TO RUN DRY
- ABILITY TO DEADHEAD

WILDEN[®]

A **DOVER** COMPANY

ENGINEERED REVOLUTION

Universal Drum Pump Kit

(One kit fits both 6 mm (¼") & 13 mm (½") Wilden Pumps)

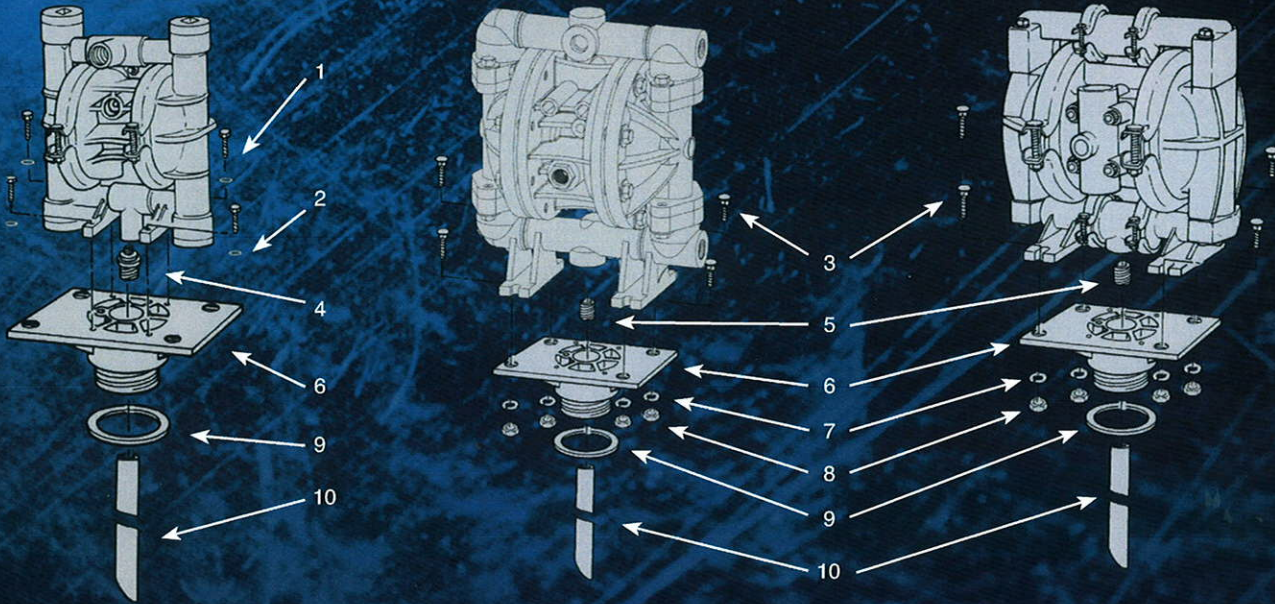
Drum Pump Kit Options:

Description	Part No.	Ship Weight	Box Dimension
Universal Drum Pump Kit-Polypropylene	50-9290-20	1.4 kg (3 lbs)	3'x6"x4"
Universal Drum Pump Kit-Teflon PTFE	50-9290-55	1.4 kg (3 lbs)	3'x6"x4"
Universal Drum Pump Kit-Nylon	50-9290-23	1.4 kg (3 lbs)	3'x6"x4"

A.025 & P.025 Installation

P100 Advanced™ Installation

A1, P1 & T1 Installation



WILDEN®

A DOVER COMPANY

22069 Van Buren St., Grand Terrace, CA 92313-5607
 Telephone (909) 422-1730 • Fax (909) 783-3440
 wilden@wildenpump.com

Your local authorized distributor:



Drum Pump Parts:

Item#	Qty	Description	Part No.	Material of Construction
1	4	Self Tapping Screws	50-6350-03	Stainless Steel
2	4	Flat Washer	00-6740-03-514	Stainless Steel
3	4	Carriage Bolt ¼ - 20x1½	02-6050-03-500	Stainless Steel
4	1	Adapter Nipple for P.025 & A.025	50-9360-20 50-9360-23 50-9360-55	Polypropylene Nylon Teflon® PTFE
5	1	Adapter Nipple for T1, A1 & P1	50-9350-23 50-9350-55	Nylon Teflon® PTFE
6	1	Drum Pump Base Adapter	50-9330-20 50-9330-23	Polypropylene Nylon
7	4	Lock Washer	50-6760-03	Stainless Steel
8	4	½ - 20 Nut	04-6400-03	Stainless Steel
9	1	Drum Pump Base Gasket	50-1480-52	Buna-N
10	1	Pick-up Tube	50-9310-20 50-9310-23 50-9310-55	Polypropylene Nylon Teflon® PTFE

WIL-19110-F-01
 Replaces TT4896

Copyright Wilden Pump & Engineering, LLC 2003 Printed in U.S.A. S-29 1/03